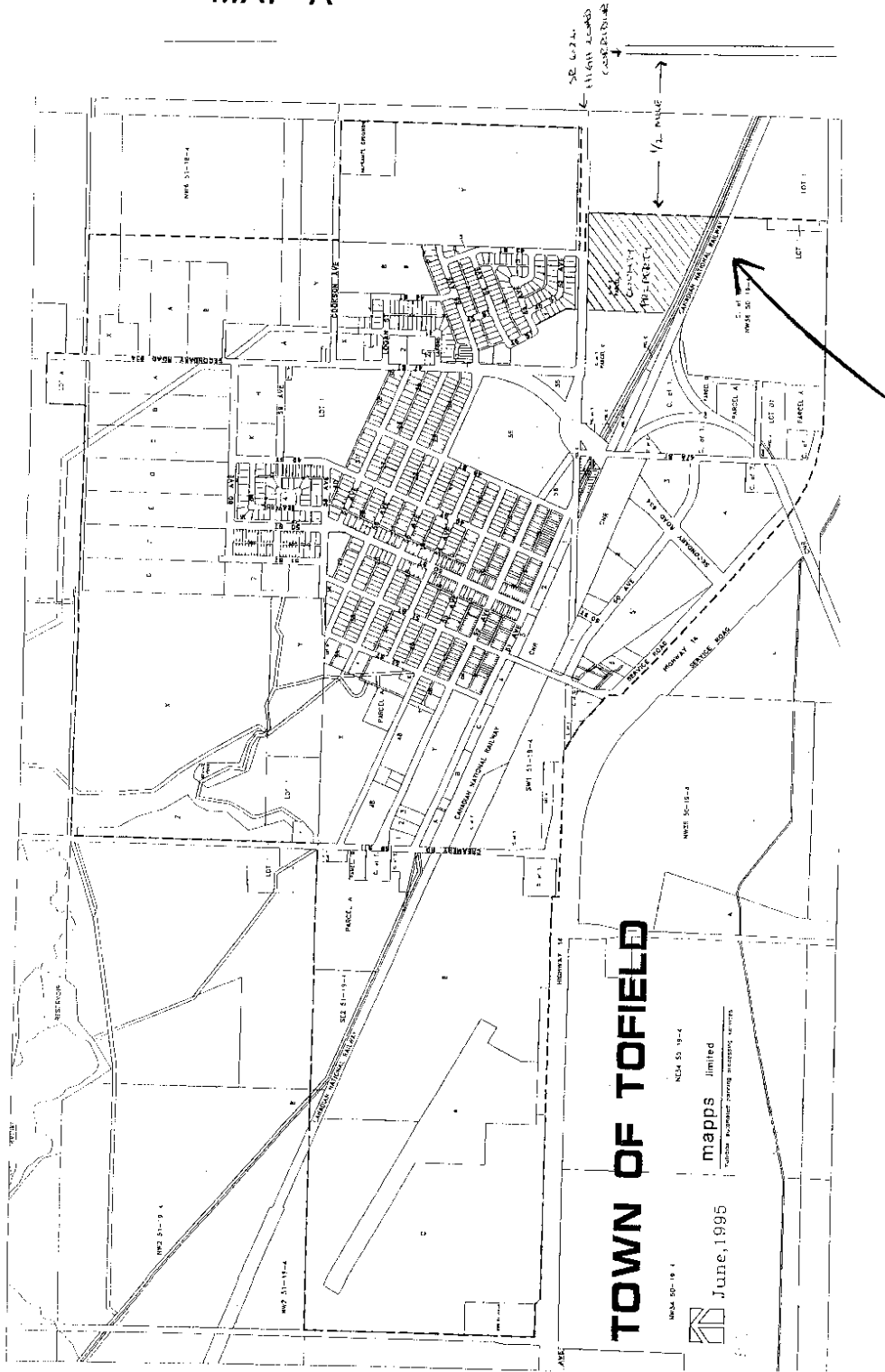


MAP A

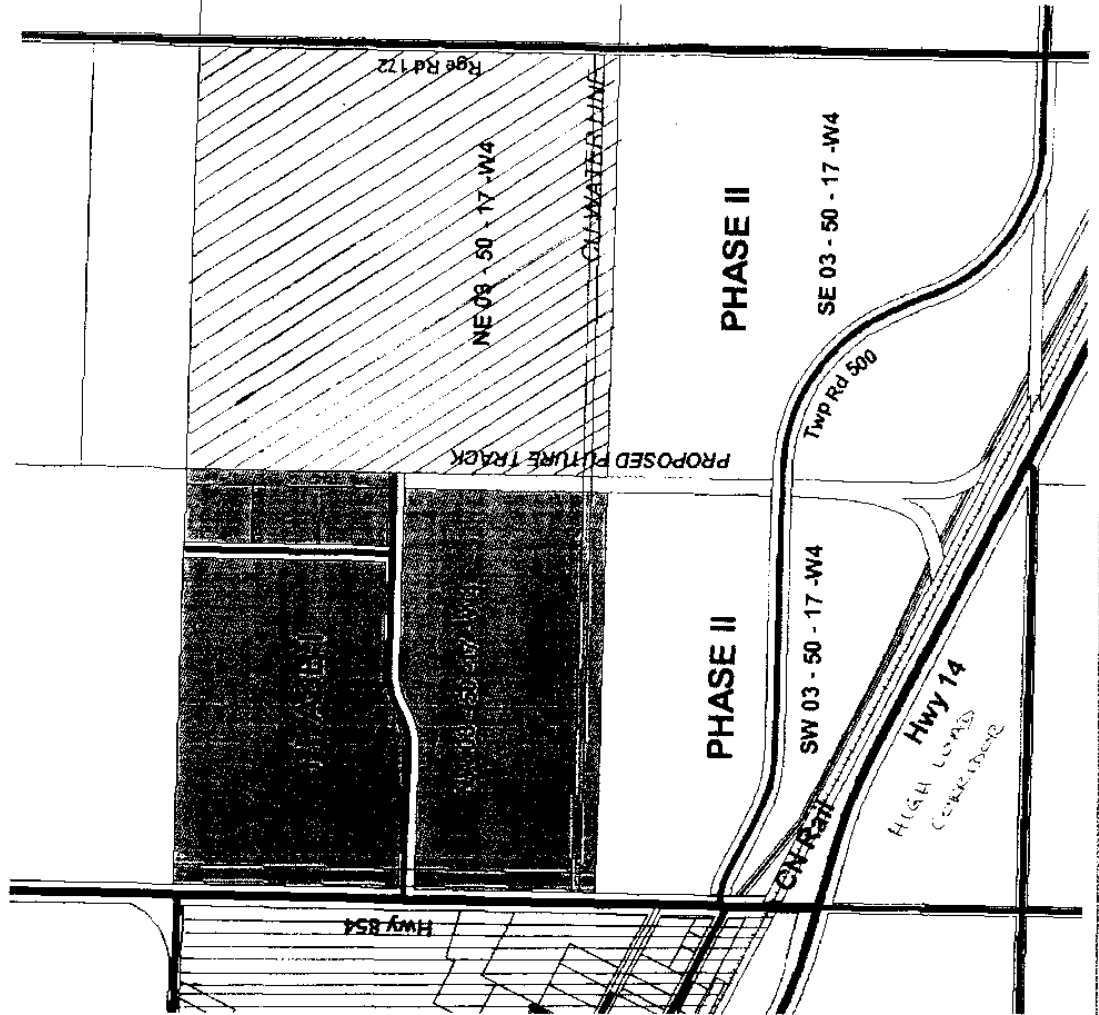


Ryley



VISIONARY AND PROGRESSIVE
WORKING TOWARDS TOMORROW
BOX 140, RYLEY, AB T0B 4A0 PH: 780-852-3730
EMAIL: info@beaver.ab.ca
Website: beaver.ab.ca
AUGUST 2007

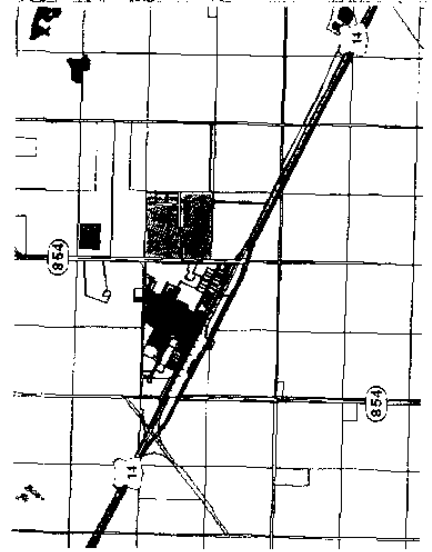
BEAVER COUNTY EQUITY PARK CONCEPT PLAN

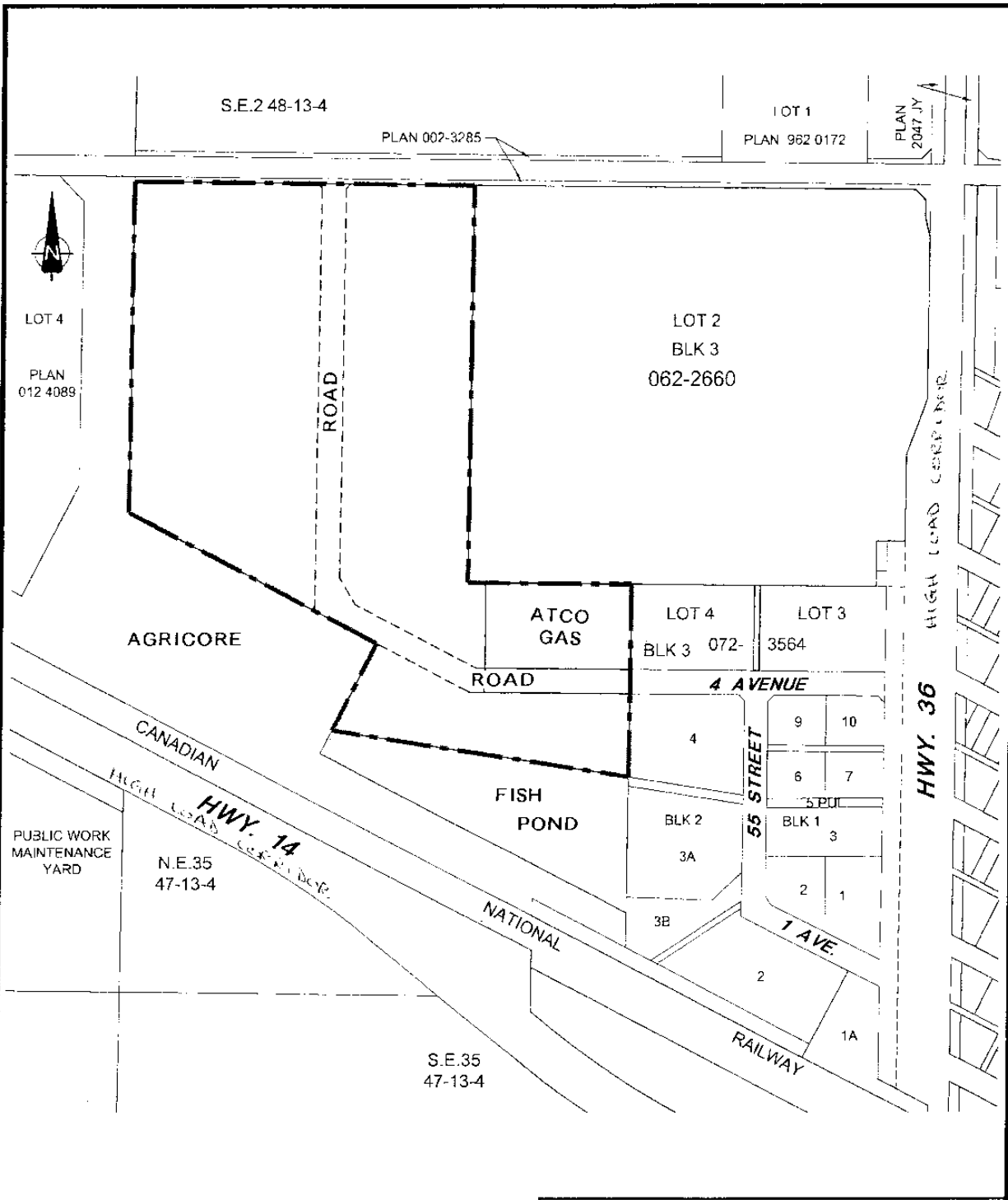


KEY MAP

EQUITY PARK
 PHASE I
 PHASE II

VILLAGE OF RYLEY





S.E.2 48-13-4

PLAN 002-3285

LOT 1
PLAN 962 0172

PLAN
2047 JY

LOT 4
PLAN
012 4089

LOT 2
BLK 3
062-2660

AGRICORE

ATCO
GAS

LOT 4
BLK 3 072-3564

LOT 3
3564

ROAD

4 AVENUE

PUBLIC WORK
MAINTENANCE
YARD

N.E.35
47-13-4

FISH
POND

BLK 2

BLK 1

3A

3

3B

2

1

1 AVE

S.E.35
47-13-4

RAILWAY

DCL SIEMENS
DCL SIEMENS ENGINEERING LTD.

VIKING INDUSTRIAL PARK

DATE: 07-07-12

SCALE: NTS

DWG. SK-20



Town of Castor

Proposed Subdivision in Lot 11 Block 51 Plan 072 8792 in the
 NW 1/4 26-37-14-W4M & SW 1/4 35-37-14-W4M
 File No. 15/082 SD2008-055
 Title Area: 6.67 ha (16.48 ac)+/-
 Subdivision Area: 6.65 ha (16.44 ac)+/-



Note: Dimensions and Areas are approximate and based on information submitted by the applicant. Dimensions need to be verified in the field by an ALS. All Dimensions in Meters.

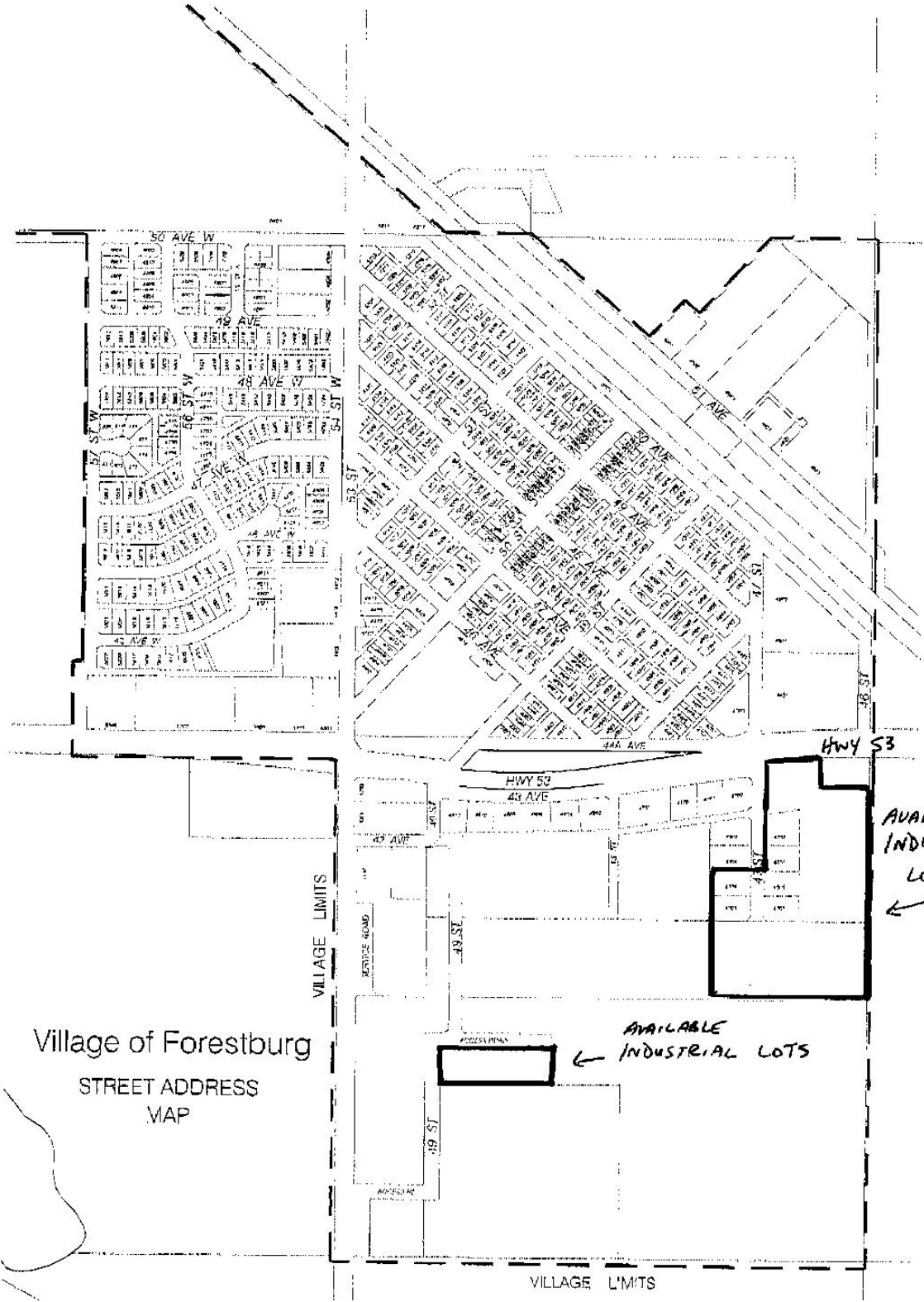




Town of Bashaw



Planning and Development
June 2004



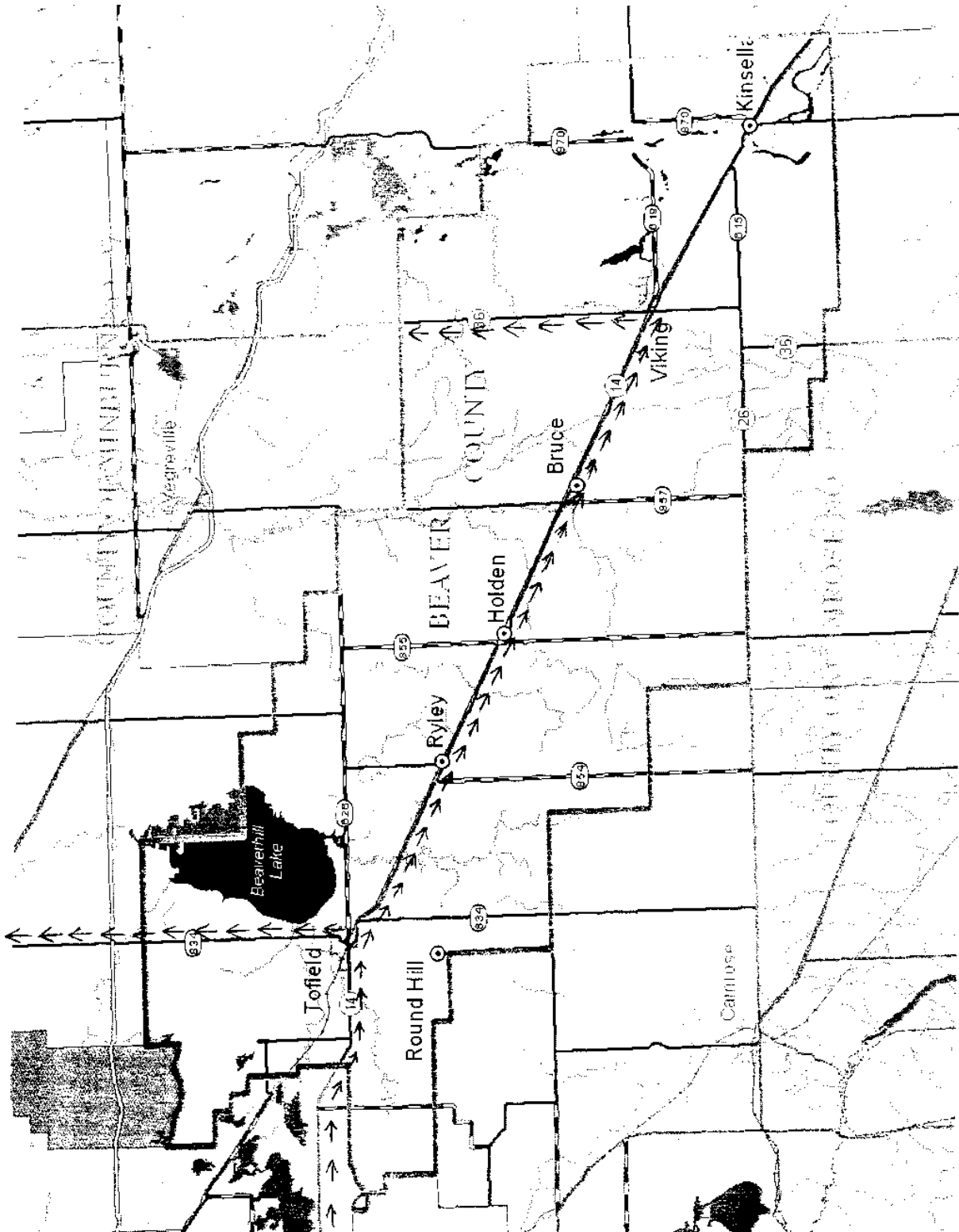
Village of Forestburg
STREET ADDRESS
MAP

VILLAGE LIMITS

VILLAGE LIMITS

AVAILABLE
INDUSTRIAL
LOTS
←

← AVAILABLE
INDUSTRIAL LOTS



→ HIGH LOAD CORRIDORS